

ColdFusion 9 Development on Windows

Prepared by M&S Consulting

Last Modified: December 13, 2010

Contents

Background	1
Download and Install ColdFusion 9 Developer Edition (Standalone)	2
Download and Install ColdFusion Builder (Standalone Eclipse Plugin)	17
Build a New ColdFusion Project (HelloWorld Example)	29

Background

I am installing ColdFusion 9 Developer Edition locally on Windows 7 Ultimate 64-Bit for development and prototyping purposes. This guide walks through an installation of:

- Standalone ColdFusion 9 Developer Edition (Server)
- Standalone ColdFusion Builder (IDE)

Upon installation of the above, this guide further walks through how to configure the ColdFusion Builder IDE and build simple “Hello World” application.

Download and Install ColdFusion 9 Developer Edition (Standalone)

The Developer Edition is a free, fully functional version of Adobe ColdFusion for the local development of applications that are intended to be deployed on either Adobe ColdFusion Standard or Adobe ColdFusion Enterprise servers. Access to applications running on a Developer Edition server is limited to two client machines.

The Trial Edition is fully functional and intended for simulated production and evaluation purposes only. It contains all of the Enterprise Edition features and will timeout after 30 days from the time you install the product. After the timeout period, the Trial Edition will revert to the Developer Edition.

ColdFusion 9 Update 1 (9.0.1)

Release date: July 13, 2010

Adobe recommends that all ColdFusion 9 users apply this complimentary 9.0.1 update. For more details, see the [FAQ](#) and [release notes](#). [Other supporting downloads](#) have also been updated for ColdFusion 9.0.1 and are available as a separate download.

Notice: By downloading this product, I authorize Adobe and its agents ("Adobe") to contact me about Adobe and its products and services, including product releases and upgrades, events, surveys, and offers. I will have the opportunity to opt out of future communications, and Adobe may use data I have provided in accordance with the Adobe Online Privacy Policy. I understand I may access, modify, or request deletion of my data. This disclaimer is not applicable for residents of Hungary or Spain.

EU residents: You are consenting that your personal data may be transferred to countries outside the EU and be stored by Adobe at Adobe's offices or the offices of Adobe's trusted vendors in the following countries: United States, Canada, India, Argentina, and the Philippines. If you do not provide consent, you may not download the software.

Please review [Adobe's Online Privacy Policy](#).

Adobe ColdFusion

SELECT

SELECT

English | AIX | 285.2 MB

English | Linux | 429.2 MB

English | Linux 64-bit | 532.5 MB

English | Mac OS X | 296.9 MB

English | Mac OS X 64-bit | 406.4 MB

English | Solaris 64-bit | 480.5 MB

English | Windows | 434.8 MB

English | Windows 64-bit | 433.5 MB

Japanese | AIX | 301.5 MB

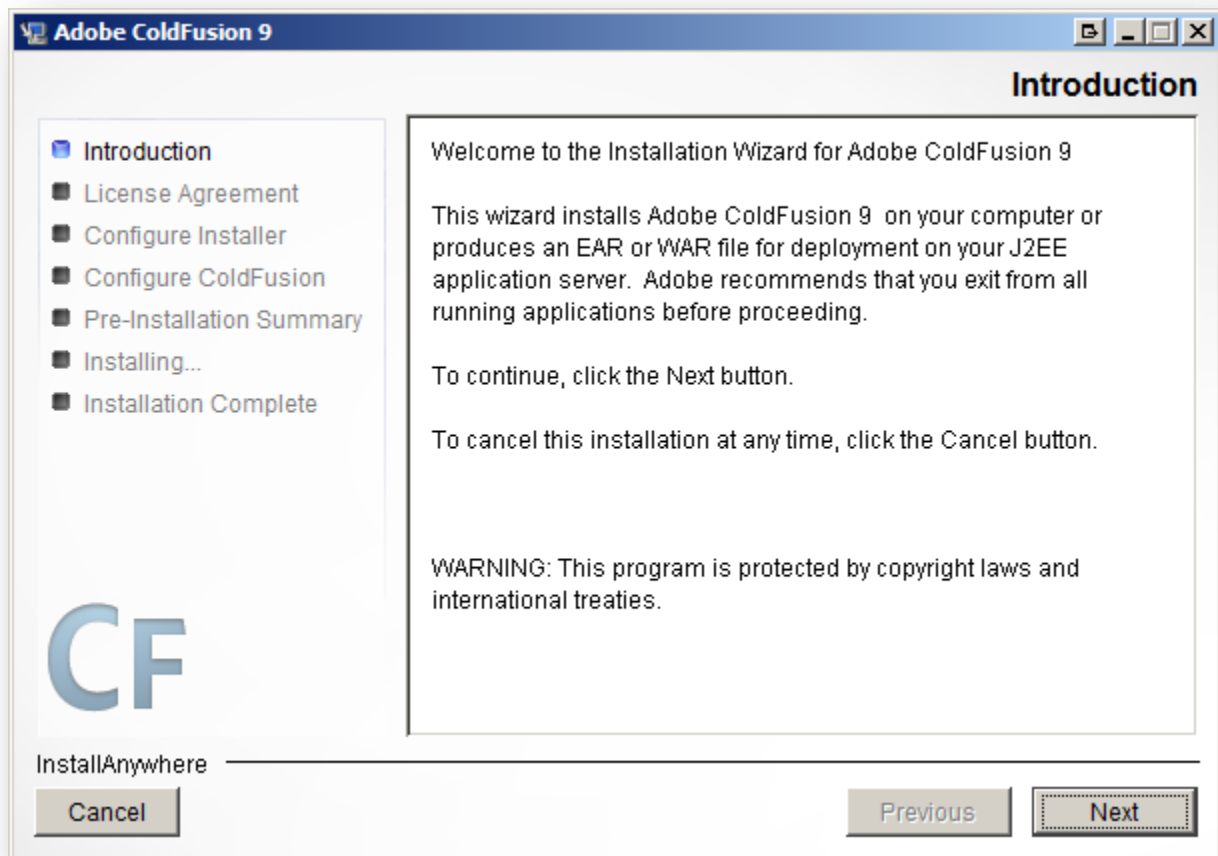
Japanese | Linux | 445.6 MB

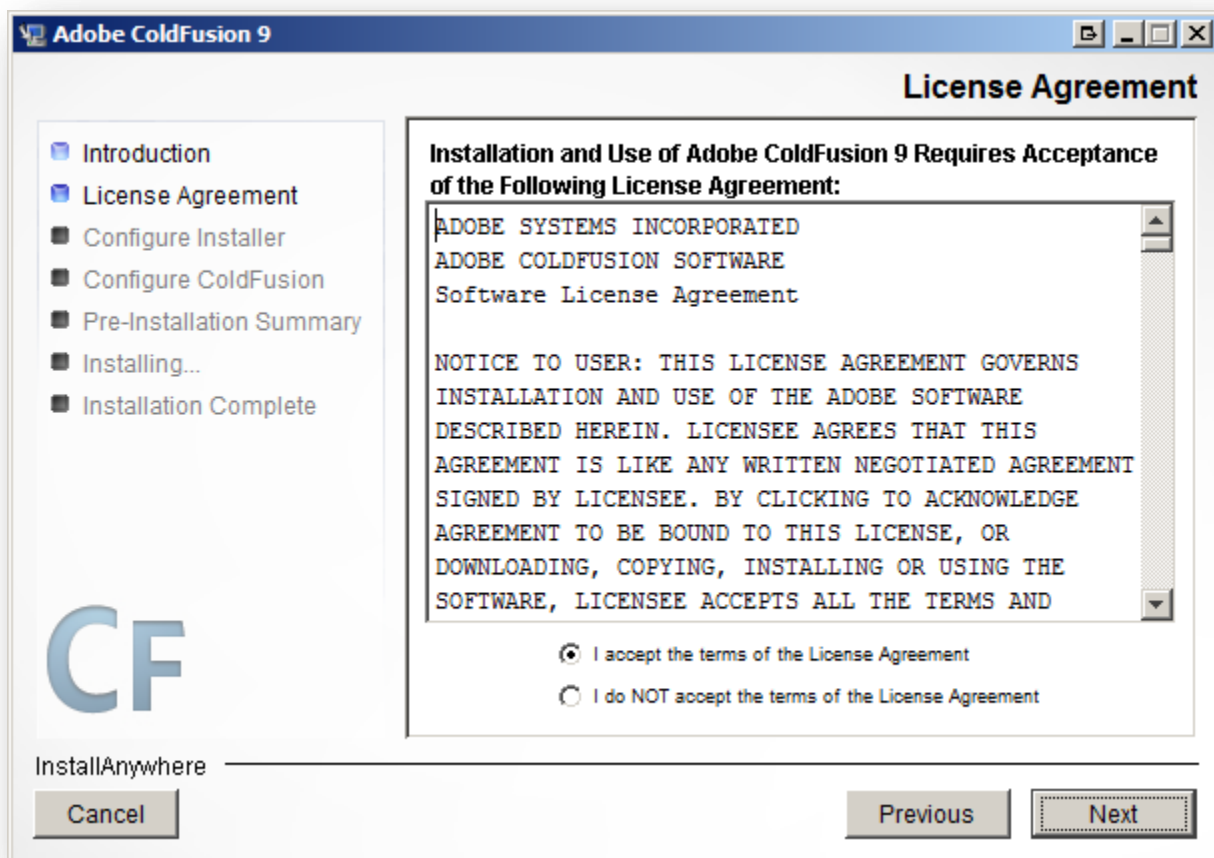
Japanese | Linux 64-bit | 548.9 MB

Download

Please note that all the Adobe ColdFusion 9 updates will take some time to download based on your connection speed. The following table lists the download sizes for each update:

Filename	Size	Checksum Value
coldfusion_9_WWE_java.jar	433.5 MB	8d4918a2525cc81f2
coldfusion_9_WWE_linux.bin	433.5 MB	c8cd752a35ff4be





Adobe ColdFusion 9

Install Type

Introduction
License Agreement
Configure Installer
Configure ColdFusion
Pre-Installation Summary
Installing...
Installation Complete

CF

If you do not have a serial number, select either 30-day trial or Developer Edition.

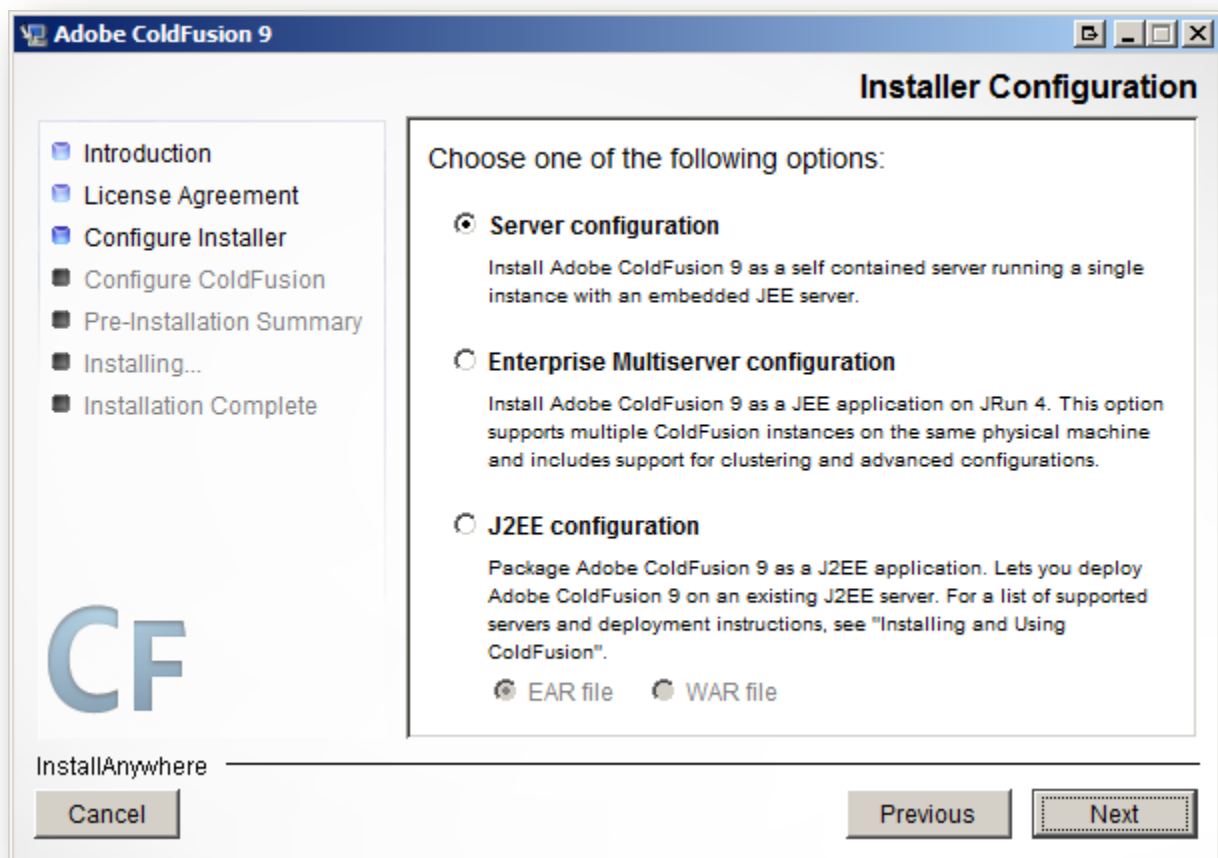
Serial Number:

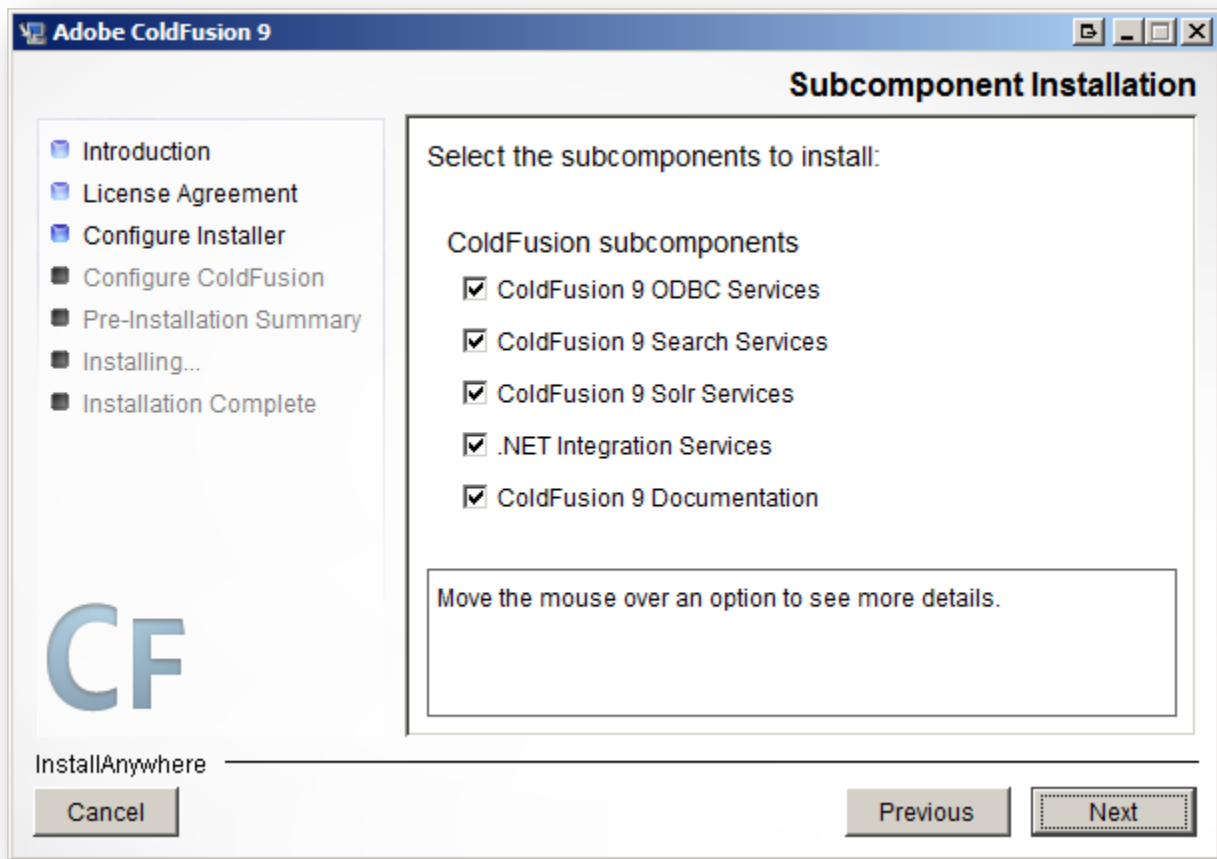
Previous Serial Number:

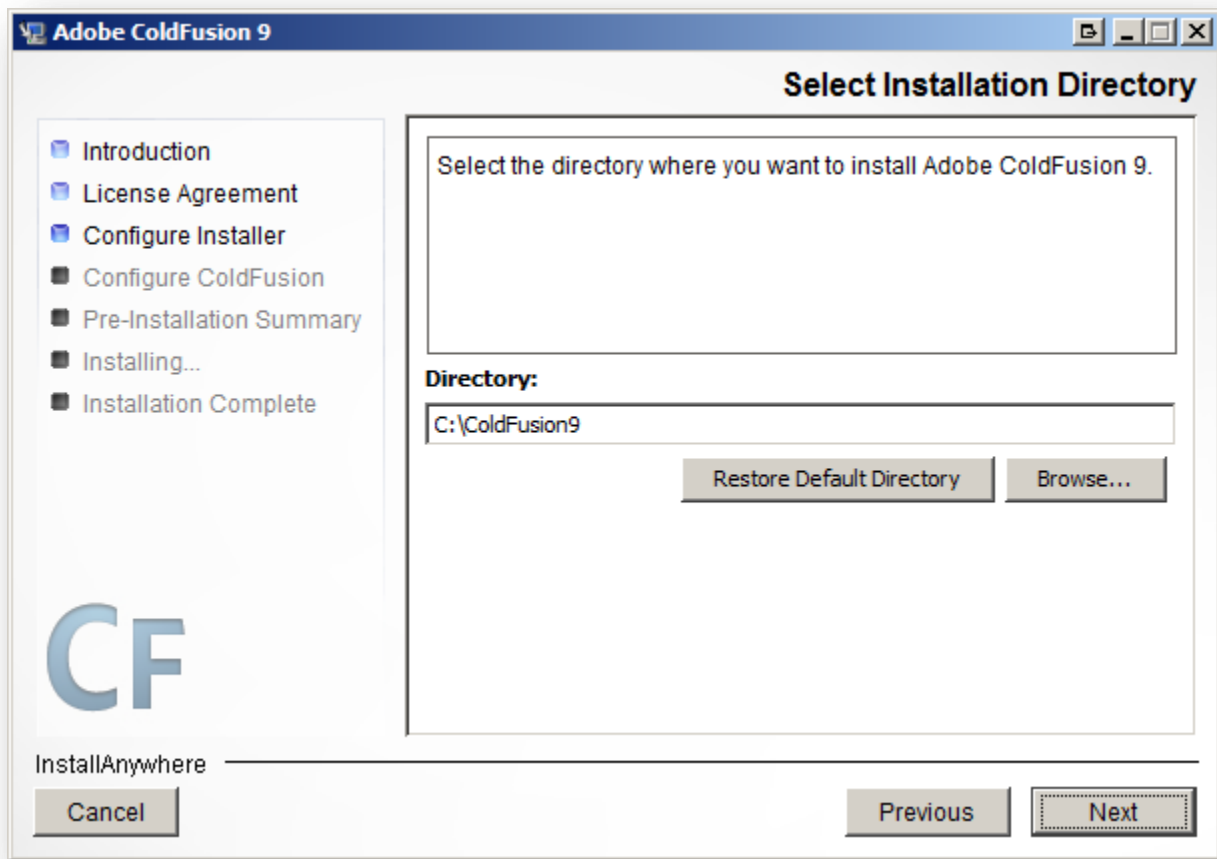
☐ 30-day trial
☒ Developer Edition

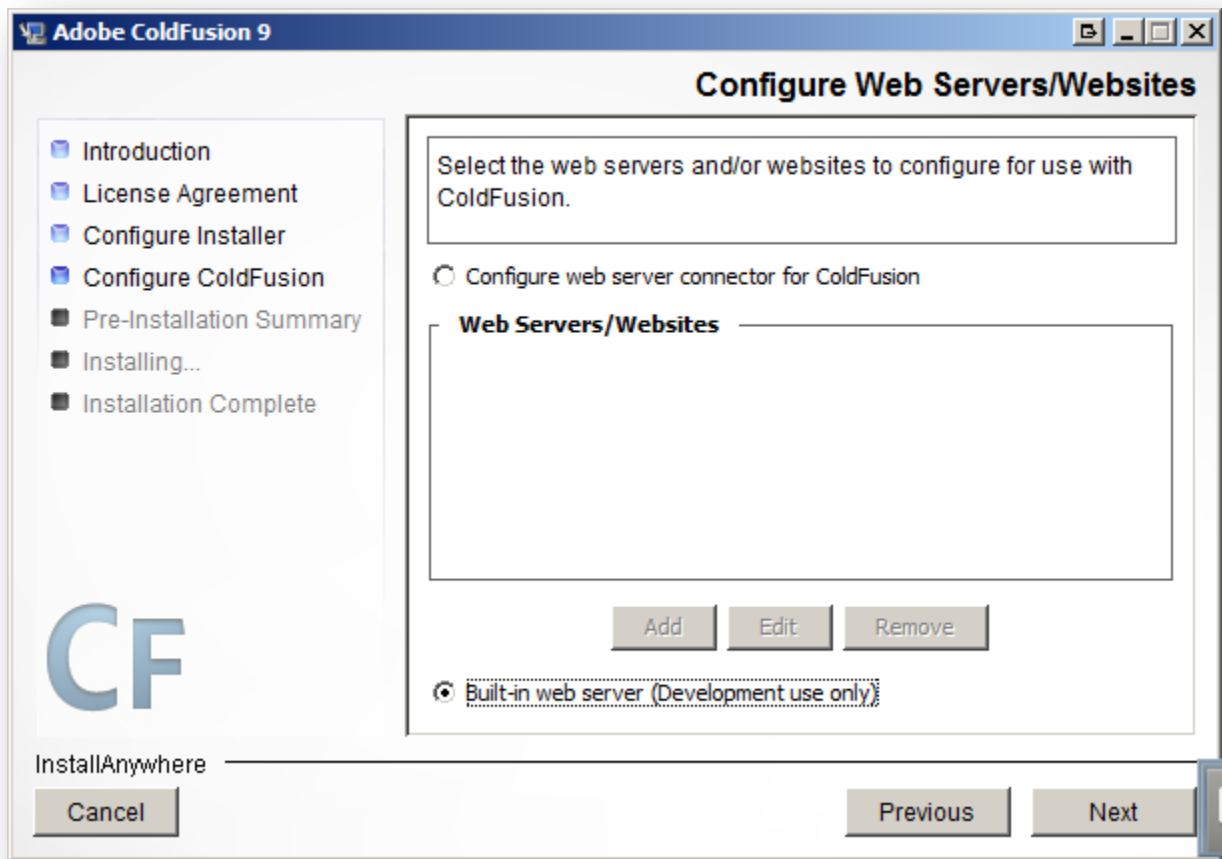
InstallAnywhere

Cancel Previous Next









Adobe ColdFusion 9

Administrator Password

- Introduction
- License Agreement
- Configure Installer
- Configure ColdFusion
- Pre-Installation Summary
- Installing...
- Installation Complete

CF

Enter the password that you will use to restrict access to the ColdFusion Administrator.

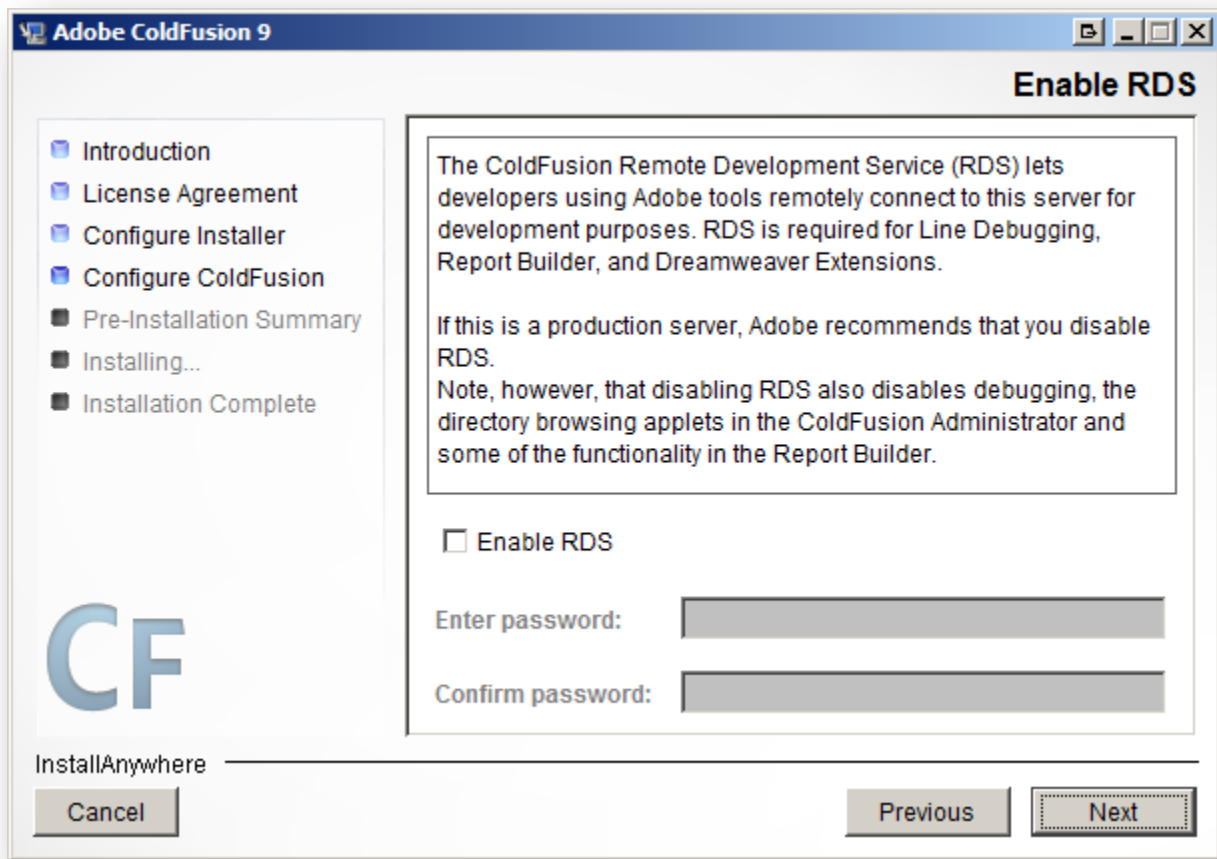
This field is required.

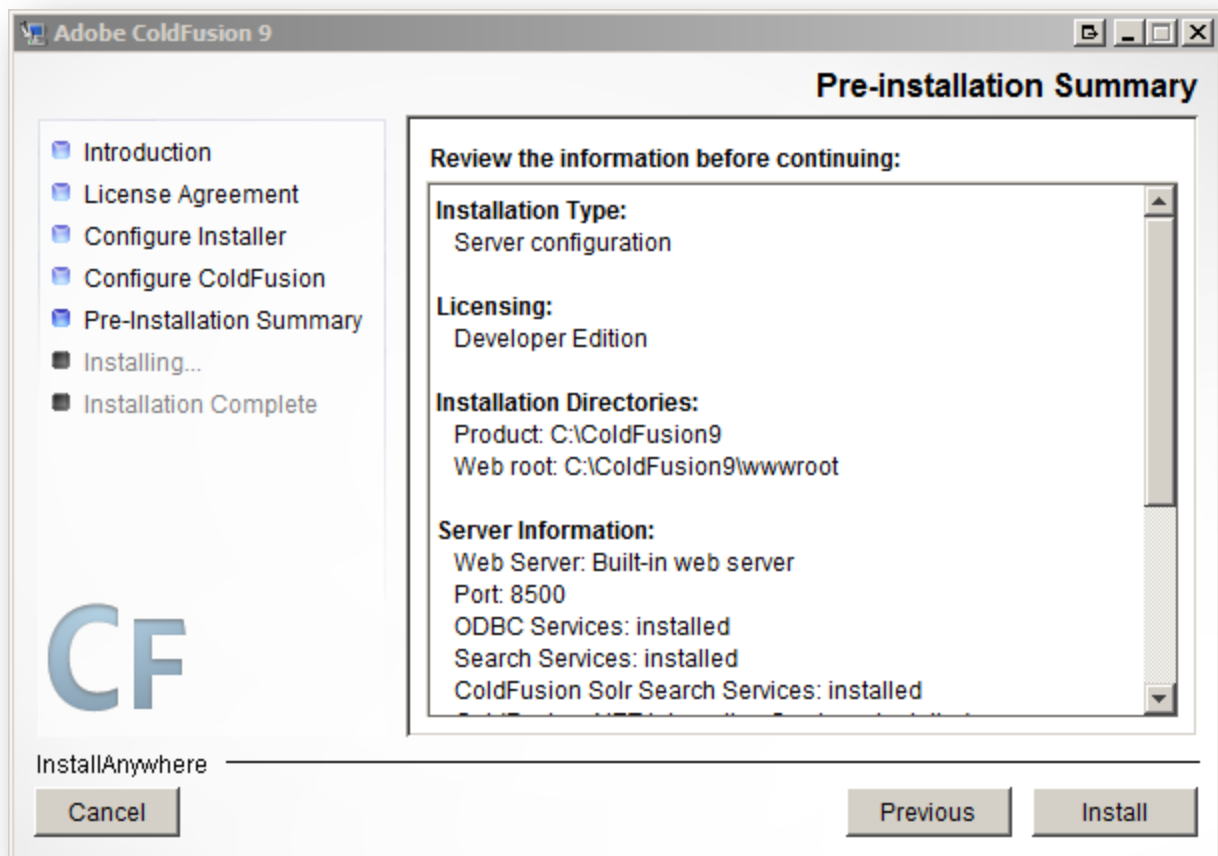
Enter password:

Confirm password:

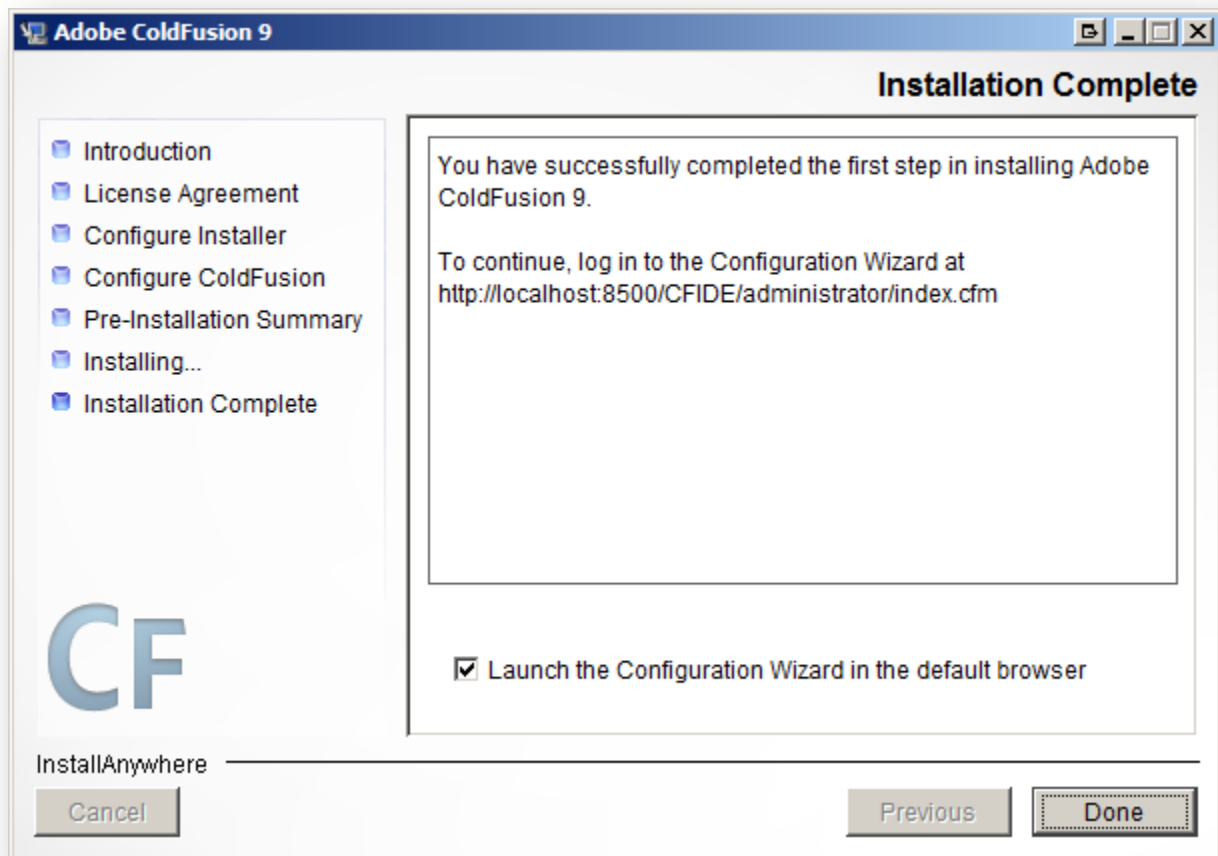
InstallAnywhere

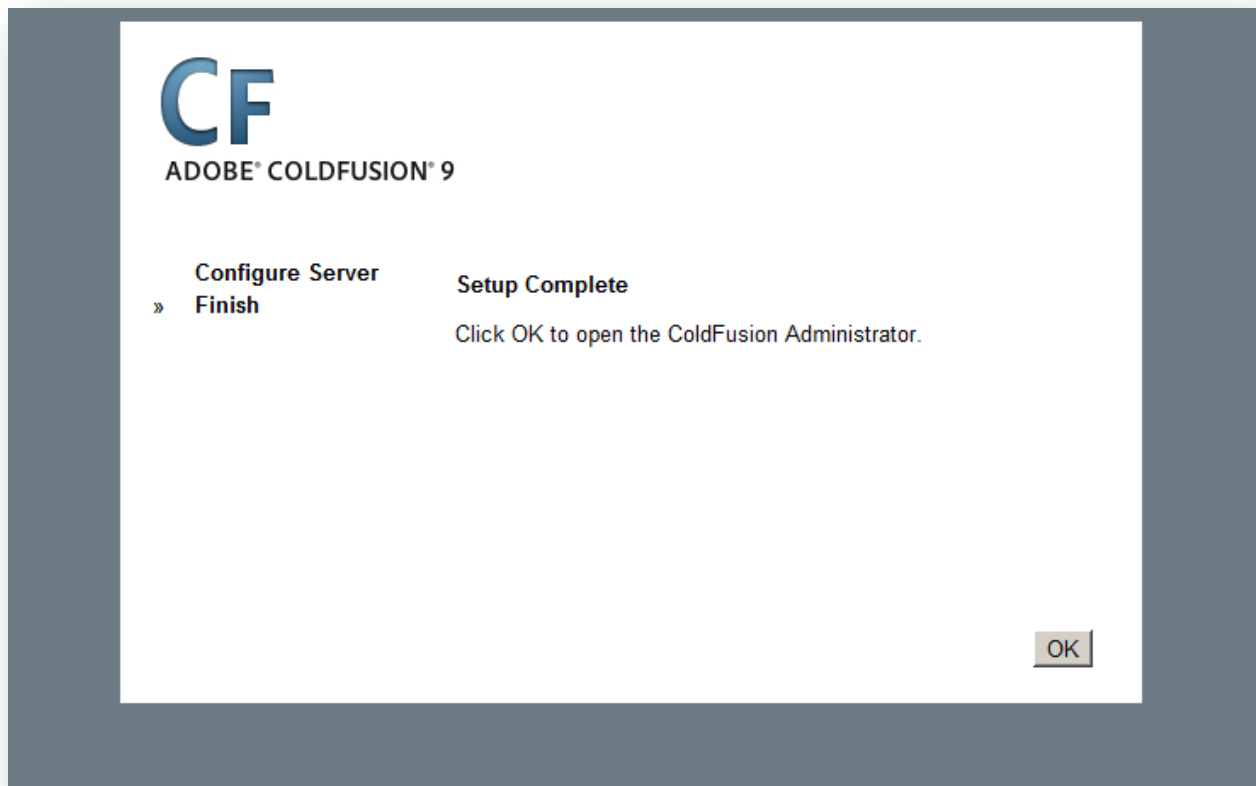
Cancel Previous Next











Verify by navigating to: <http://localhost:8500/CFIDE/administrator/index.cfm>

[Home](#)
[Help](#)
[Feedback](#)

SERVER SETTINGS

- Settings
- Request Tuning
- Caching
- Client Variables
- Memory Variables
- Mappings
- Mail
- Charting
- Form Management
- Document
- Java and JVM
- Settings Summary

DATA & SERVICES

- Data Sources
- ColdFusion Collectors
- Verify HTTP Server
- Site Server
- Migrate Verify Collections
- Web Services
- Flex Integration

DEBUGGING & LOGGING

SERVER MONITORING

EXTENSIONS

EVENT GATEWAYS

SECURITY

PACKAGING & DEPLOYMENT

Welcome to the ColdFusion Administrator

You are using the **ColdFusion Developer Edition**. This free edition provides the features of ColdFusion Enterprise, but can only be accessed from the local machine and two additional IP addresses. The Developer Edition enables you to learn and develop ColdFusion applications on your standalone workstation. To deploy your ColdFusion applications, you will need to purchase a license to the ColdFusion Edition of your choice or utilize ColdFusion hosting services.

Create better Internet applications quickly and easily

Thank you for trying ColdFusion 9

You've just made your life as a developer a little easier! We're confident you'll find that Adobe® ColdFusion® 9 software will help you create compelling Internet applications while solving day-to-day developer challenges. Now you can quickly deliver rich and engaging application experiences to your users. We encourage you to explore the new and enhanced capabilities with these helpful tips and demonstrations.

Jump start your trial
Multimedia demonstrations help you maximize your evaluation experience.

[VIEW DEMOS](#)

Feature highlights
The highlights page is the quickest way to learn what's new in ColdFusion 9.

[VIEW NEW FEATURES](#)

Ready to buy?
Get more information on purchasing options.

[BUY NOW](#)

ColdFusion Resources

The following are links to helpful resources within the product as well as on external sites.

Getting Started

- Getting Started Experience »
- Example Applications »
- ColdFusion Developer Center Getting Started »

Product Information

- About ColdFusion »
- Documentation »
- TechNotes »
- Release Notes »
- Product Editions »
- System Requirements »
- Latest product information »

Technical Support and Training

- ColdFusion Support Center »
- ColdFusion TechNotes »
- Additional Documentation »
- Online/classroom training »

Additional Installers

- ColdFusion Report Builder »
- ColdFusion Extensions for Eclipse »

Product Updates

- Check for product updates »
- Check for hot fixes »

Community

- ColdFusion Developer Center »
- ColdFusion Developers Exchange »
- Newsletters »
- User groups »
- Find a ColdFusion hosting partner »

Security Zone

- Learn how to keep your server secure »
- Sign up to receive security bulletins »

Copyright © 1995-2010 Adobe Systems, Inc. All rights reserved. U.S. Patents Pending.

Notices, terms and conditions pertaining to third party software are located at <http://www.adobe.com/go/3psoftware> and incorporated by reference herein.

Download and Install ColdFusion Builder (Standalone Eclipse Plugin)

Related ColdFusion downloads

You may also be interested in related ColdFusion downloads including the ColdFusion 9 Report Builder, Apache SOLR Standalone Installer, and Adobe LiveCycle Data Services 2.6.1 Components.

Get started using ColdFusion

After you install ColdFusion 9, get started quickly by using the resources in the ColdFusion Developer Center.

You may want to try these related products:

Adobe ColdFusion 9 Trial Edition

SELECT

Download

[System requirements](#)

Adobe Flash Builder 4

SELECT

Download

[System requirements](#)

Adobe ColdFusion Builder

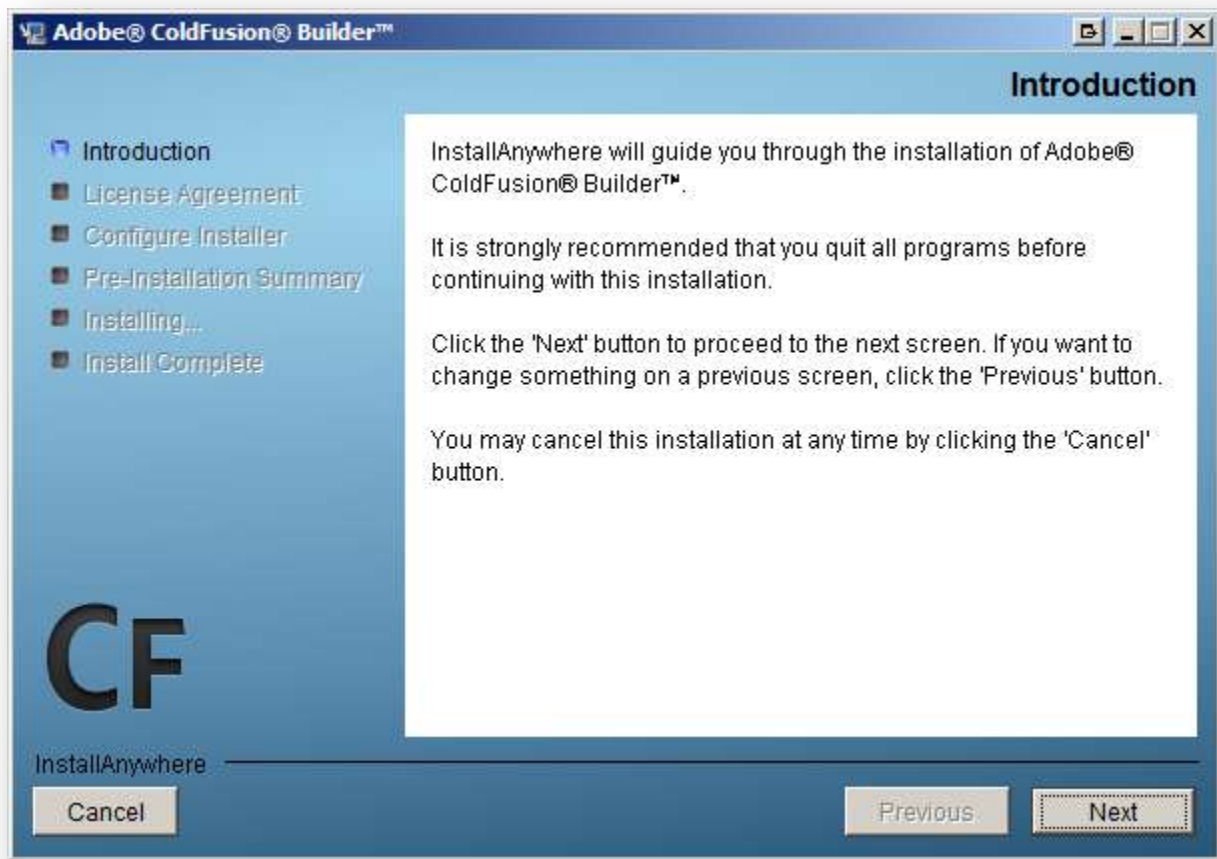
SELECT

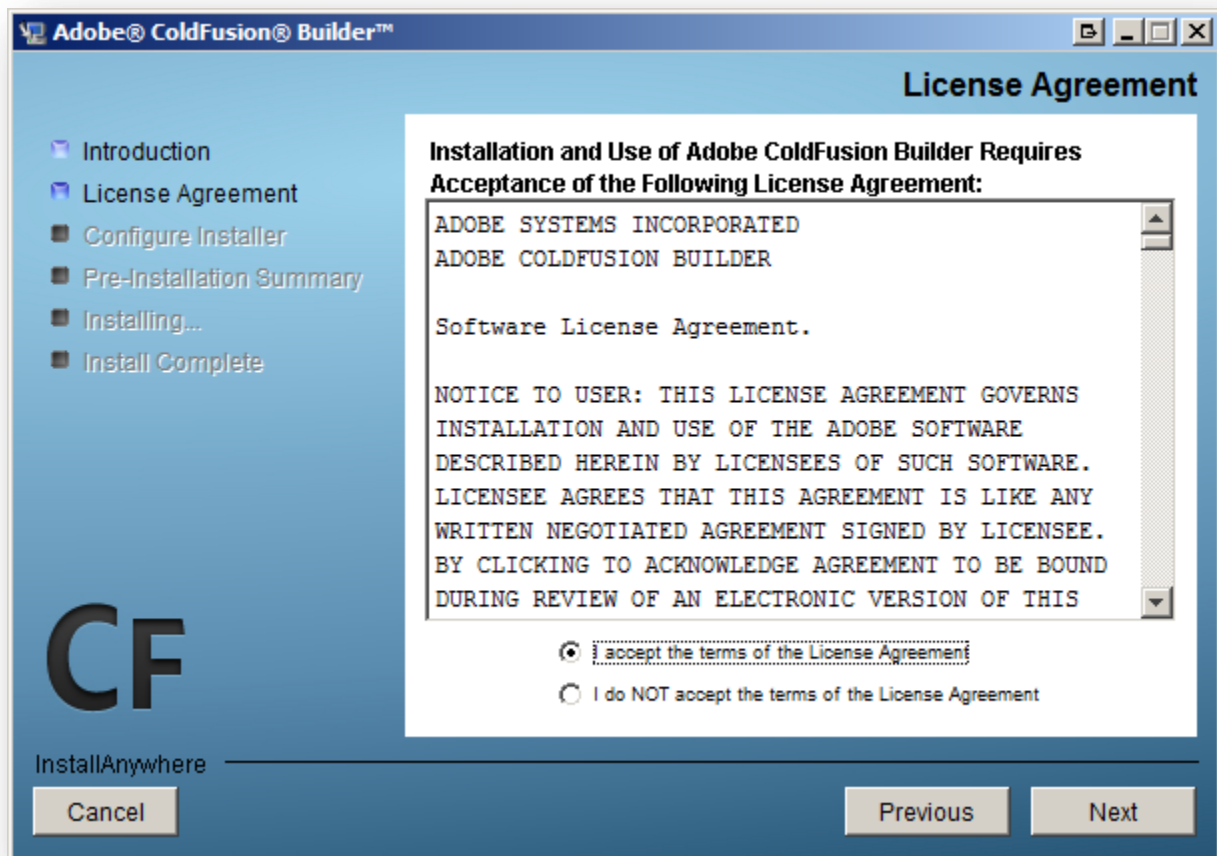
Download

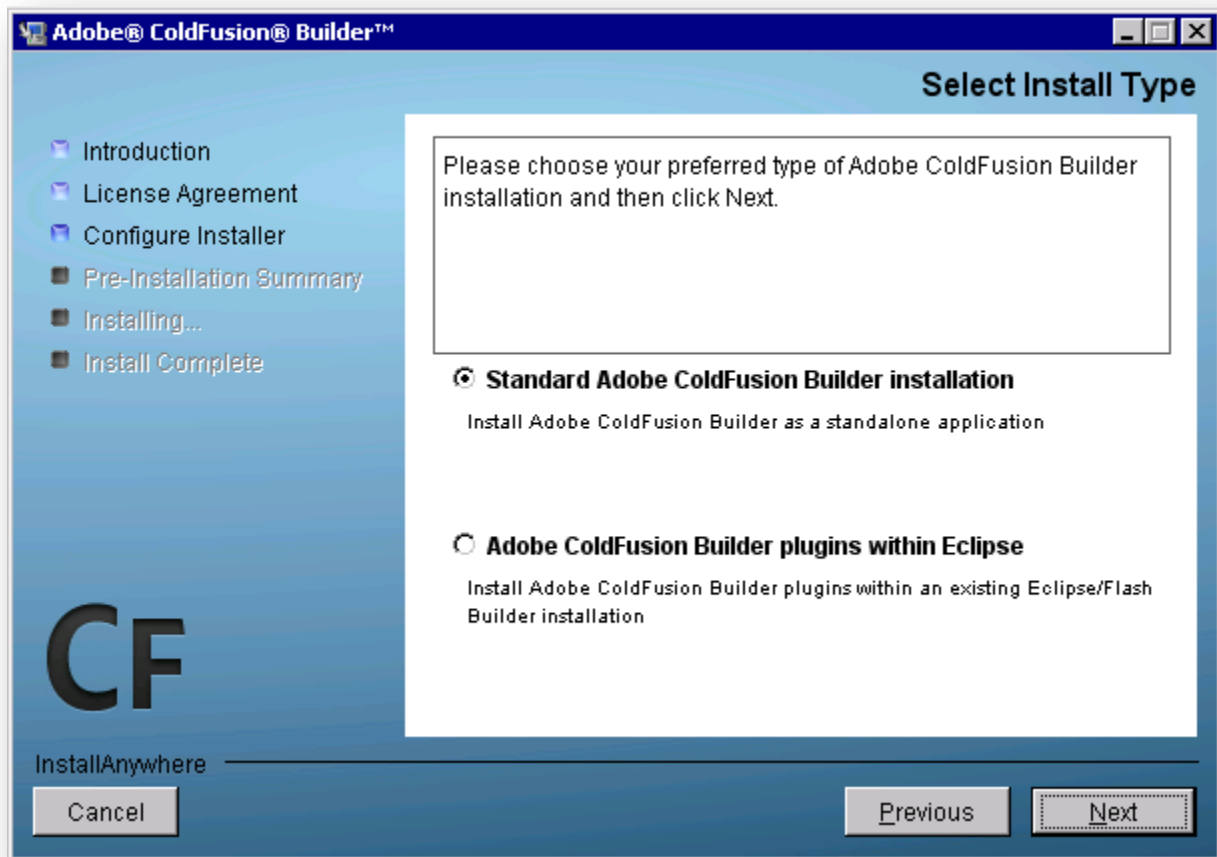
[System requirements](#)

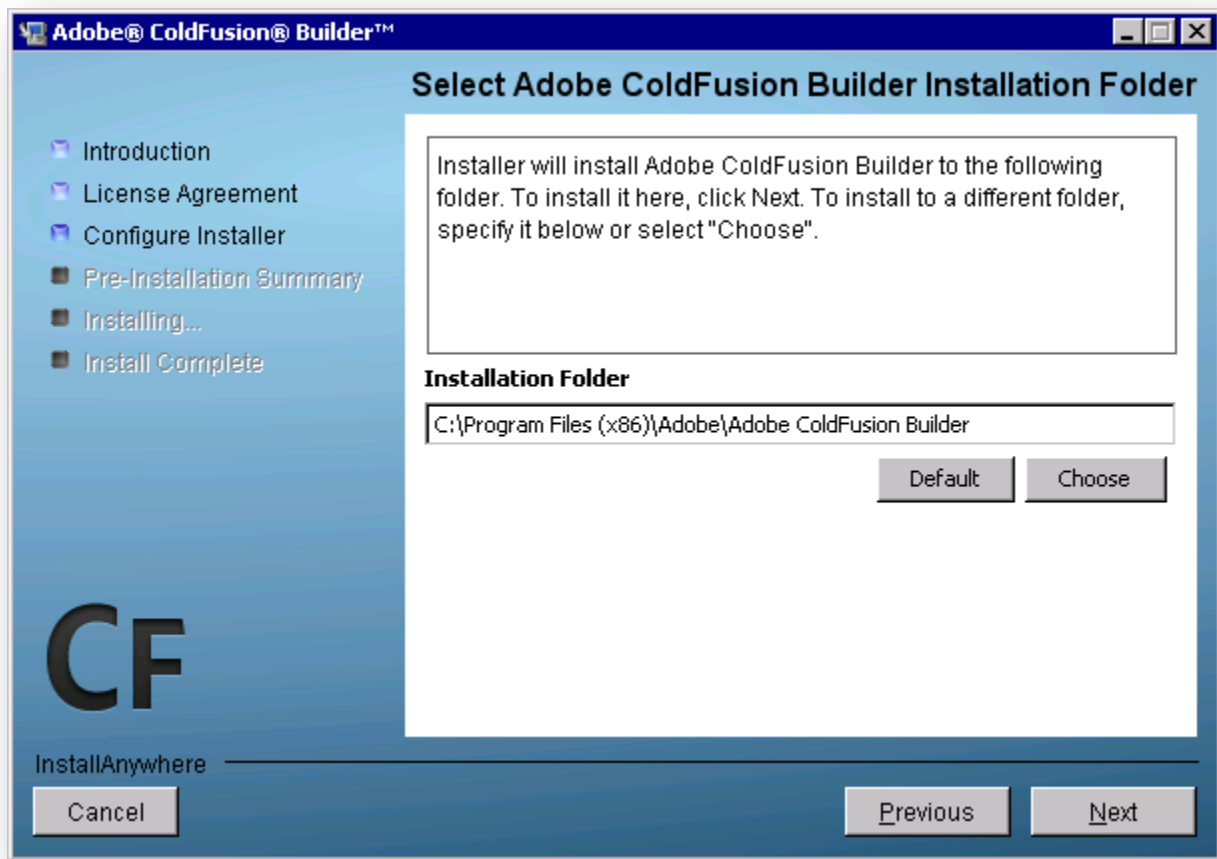
SELECT
English | Mac OS X | 337.5 MB
English | Windows | 342.4 MB
Japanese | Mac OS X | 337.5 MB
Japanese | Windows | 342.4 MB

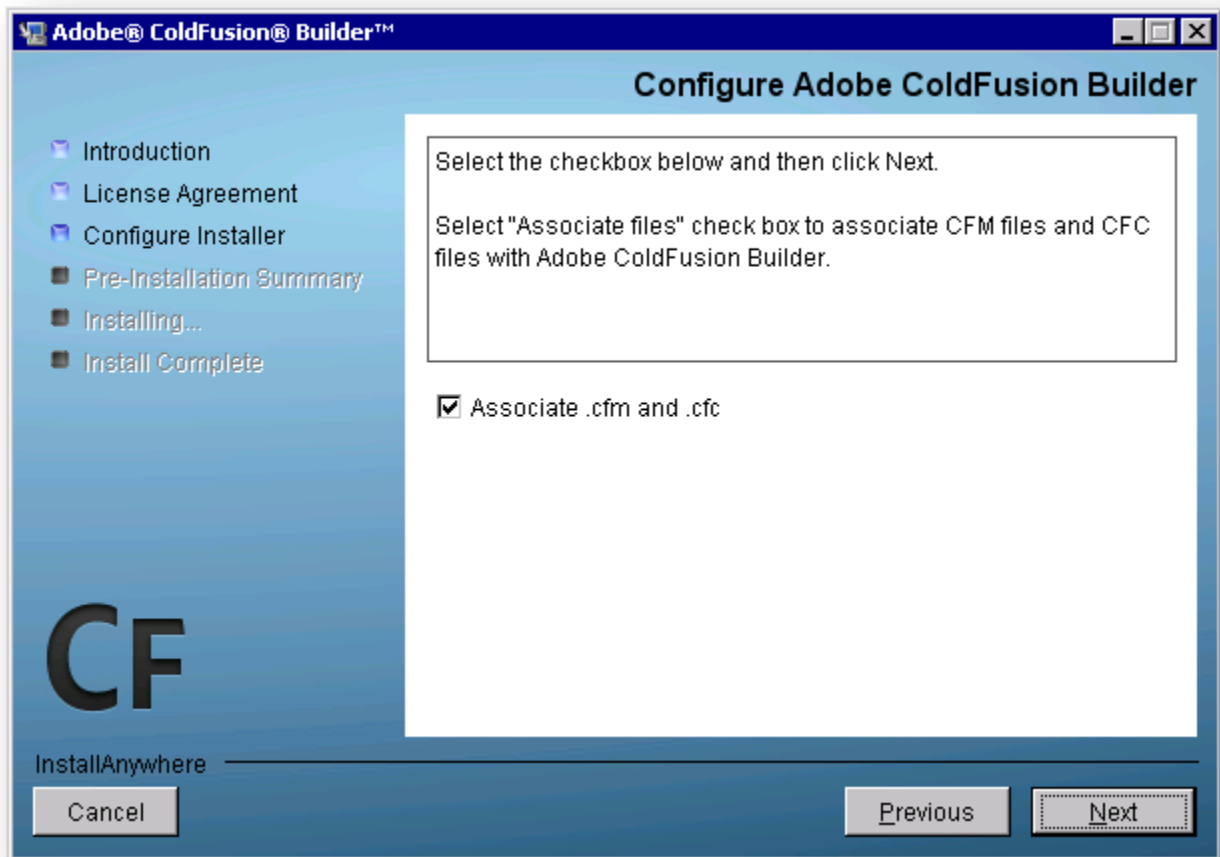
[See all downloads](#)

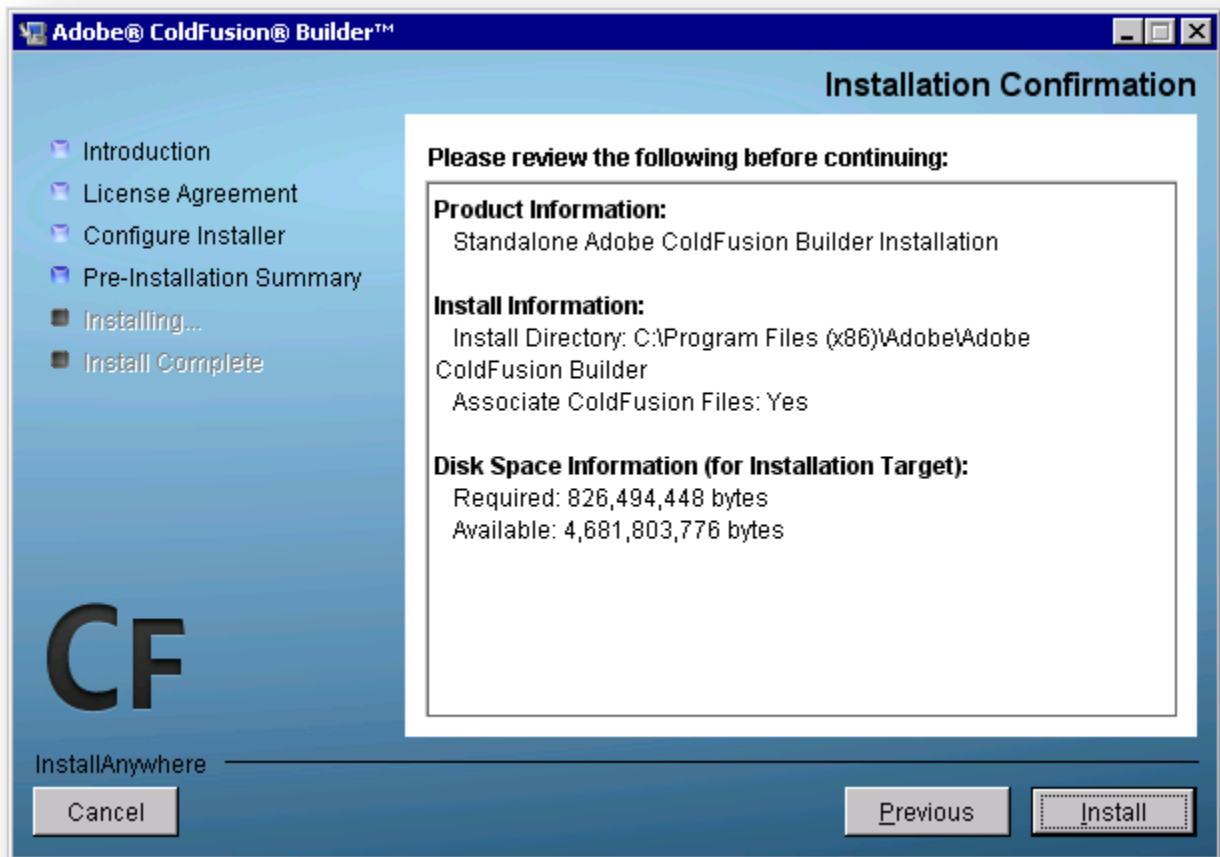




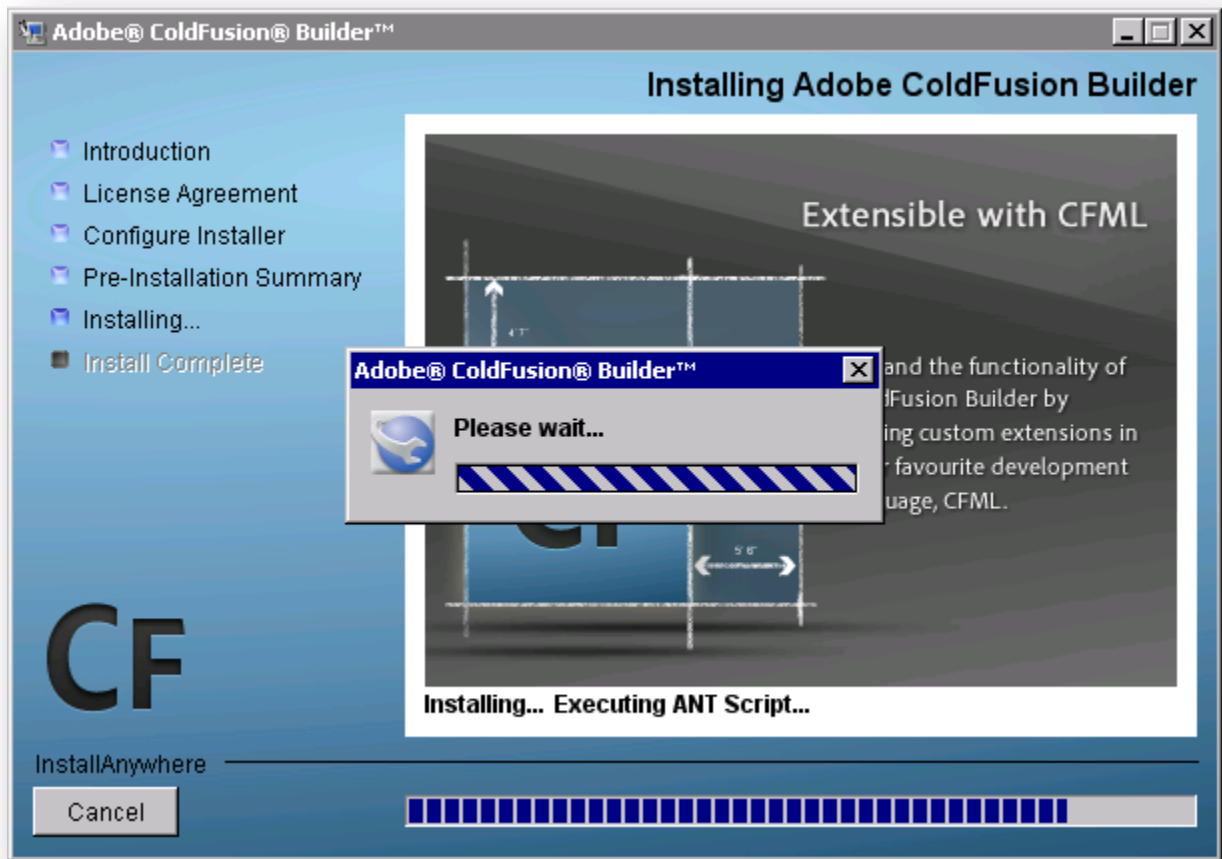


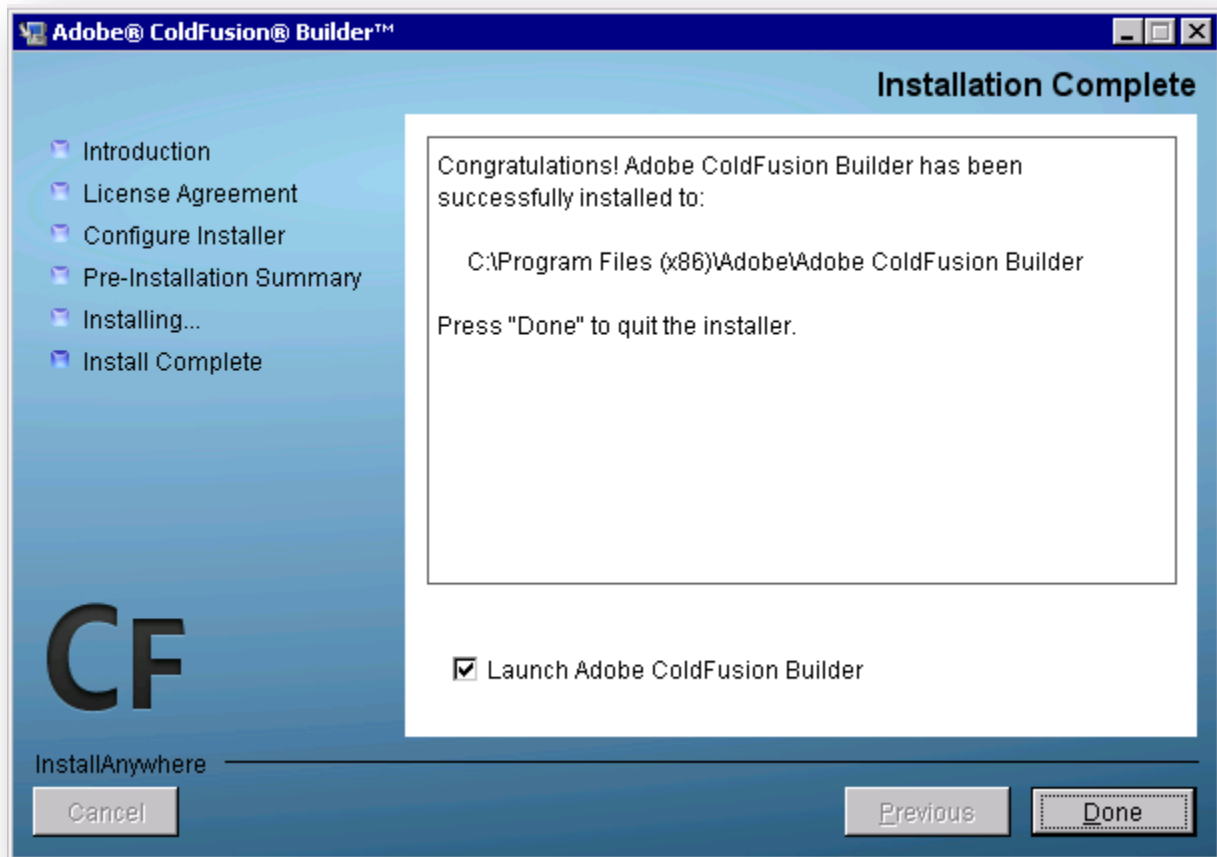












Adobe ColdFusion Builder : Setup

Software Setup

Choose an option below:

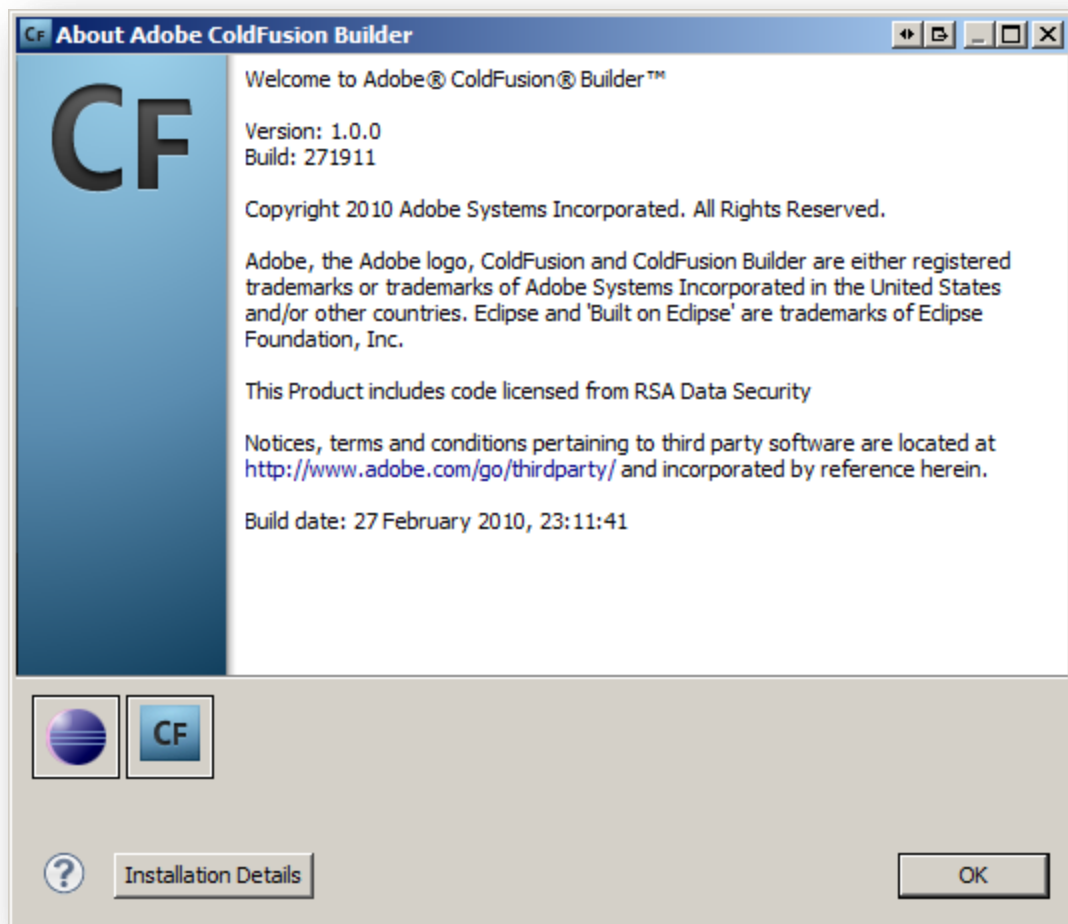
☒ I'd like to use this product on a trial-basis.
(Available for 60 days)

☐ I have a serial number for this product.

Your serial number is located on the back of your DVD case, on your Adobe Open Options license certificate, or in your email receipt from the Adobe.com Store (download purchases only).

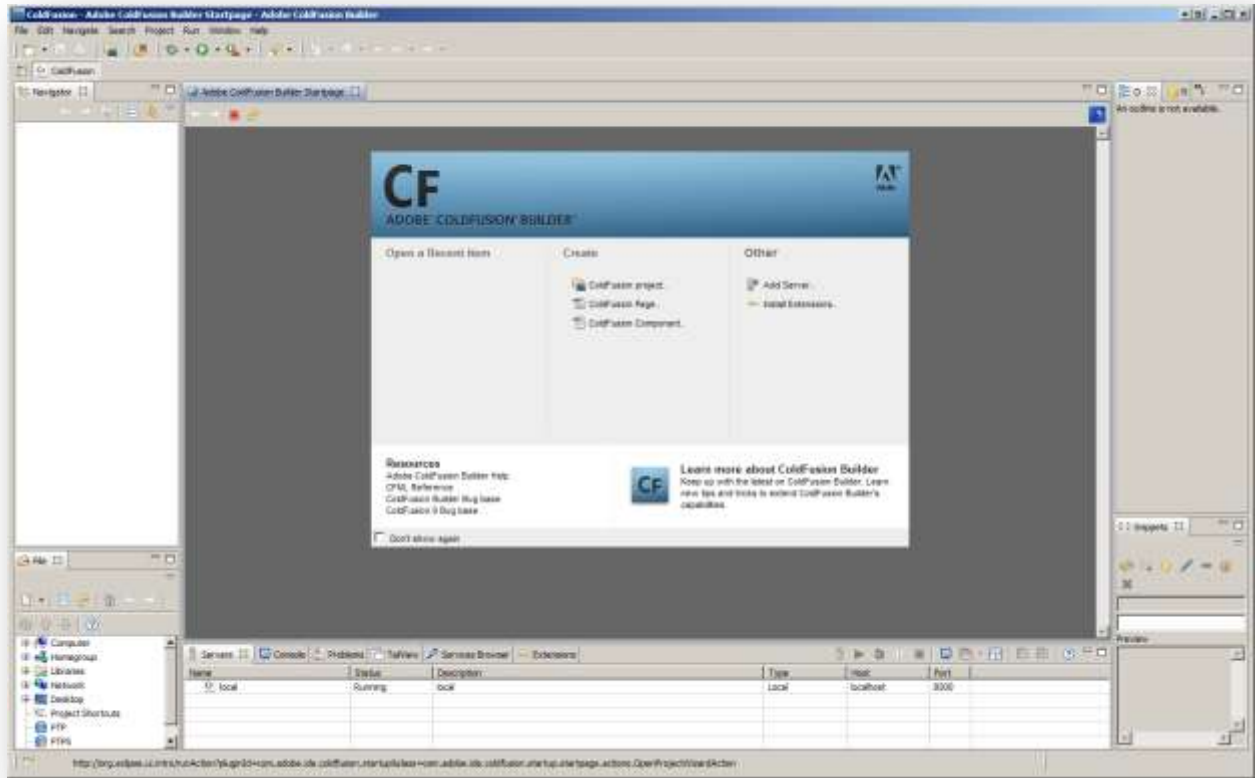
[Buy a serial number for Adobe ColdFusion Builder online](#)

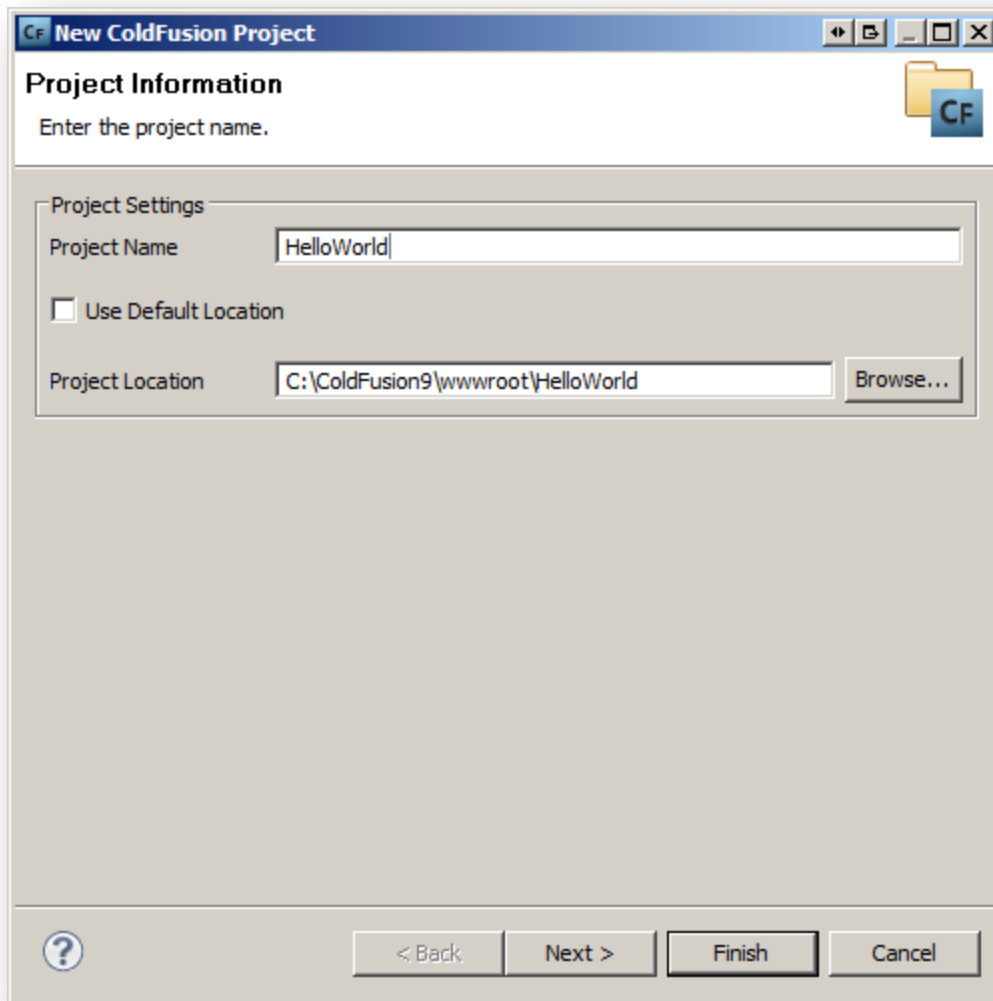
[End User License Agreement](#)



Help > Product Details

Build a New ColdFusion Project (HelloWorld Example)





CF New ColdFusion Project

Project Information
Enter the project name.

Project Settings

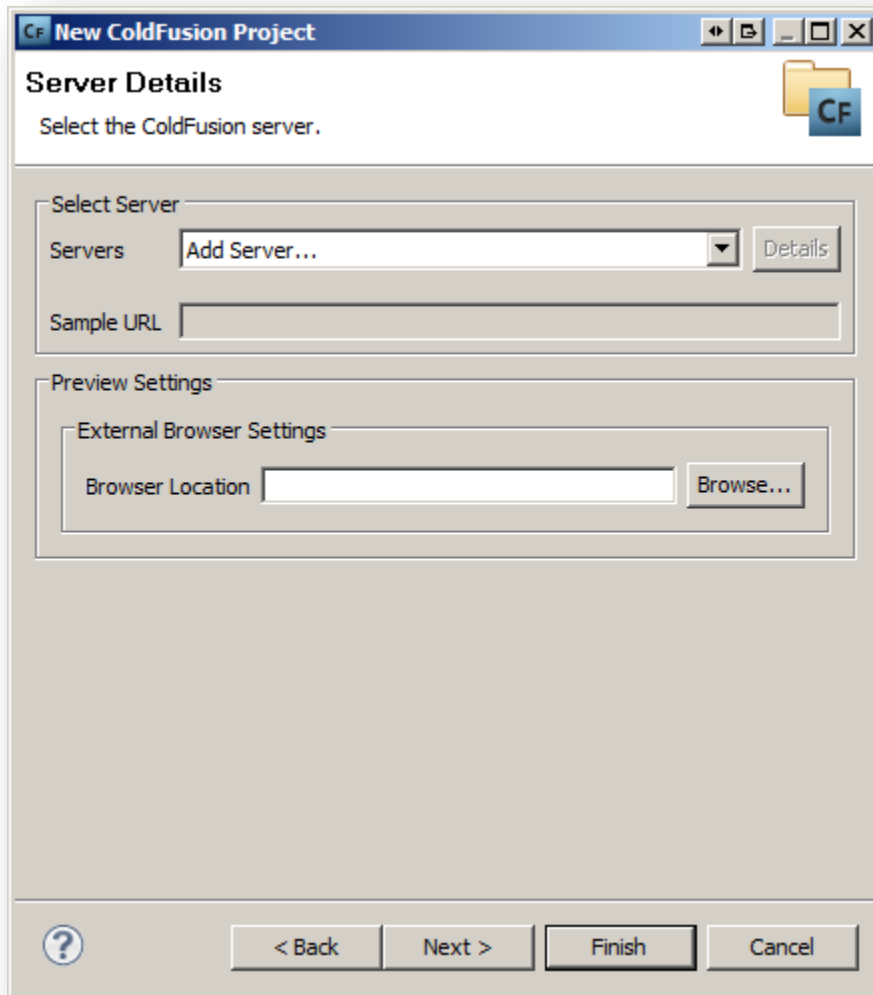
Project Name: HelloWorld

☐ Use Default Location

Project Location: C:\ColdFusion9\wwwroot\HelloWorld **Browse...**

Navigation: ? < Back Next > Finish Cancel

For ease of configuration, create a folder called HelloWorld in c:\ColdFusion9\wwwroot for your project and reference it within ColdFusion Builder as above.





The screenshot shows the 'New ColdFusion Project' dialog box with the 'Server Details' tab selected. The dialog has a title bar with 'CF New ColdFusion Project' and standard window controls. Below the title bar is a section titled 'Server Details' with a subtitle 'Select the ColdFusion server.' and a folder icon with 'CF' on it. The main area is divided into two sections: 'Select Server' and 'Preview Settings'. The 'Select Server' section contains a 'Servers' dropdown menu with 'Add Server...' selected, a 'Details' button, and a 'Sample URL' text field. The 'Preview Settings' section contains an 'External Browser Settings' group box with a 'Browser Location' text field and a 'Browse...' button. At the bottom of the dialog are four buttons: a help button (question mark), '< Back', 'Next >', and 'Finish'. The 'Finish' button is highlighted with a thick border.

Select "Add Server..." from the Servers dropdown to add your local server.

CF New ColdFusion Server Setup

Server Settings

 Enter the server context root.



General Settings

Server Name

Description

Application Server

Host Name

☒ Is Local ☐ Is Remote

WebServer Port

J2EE Settings

Context Root

Application Server Name


Other Settings

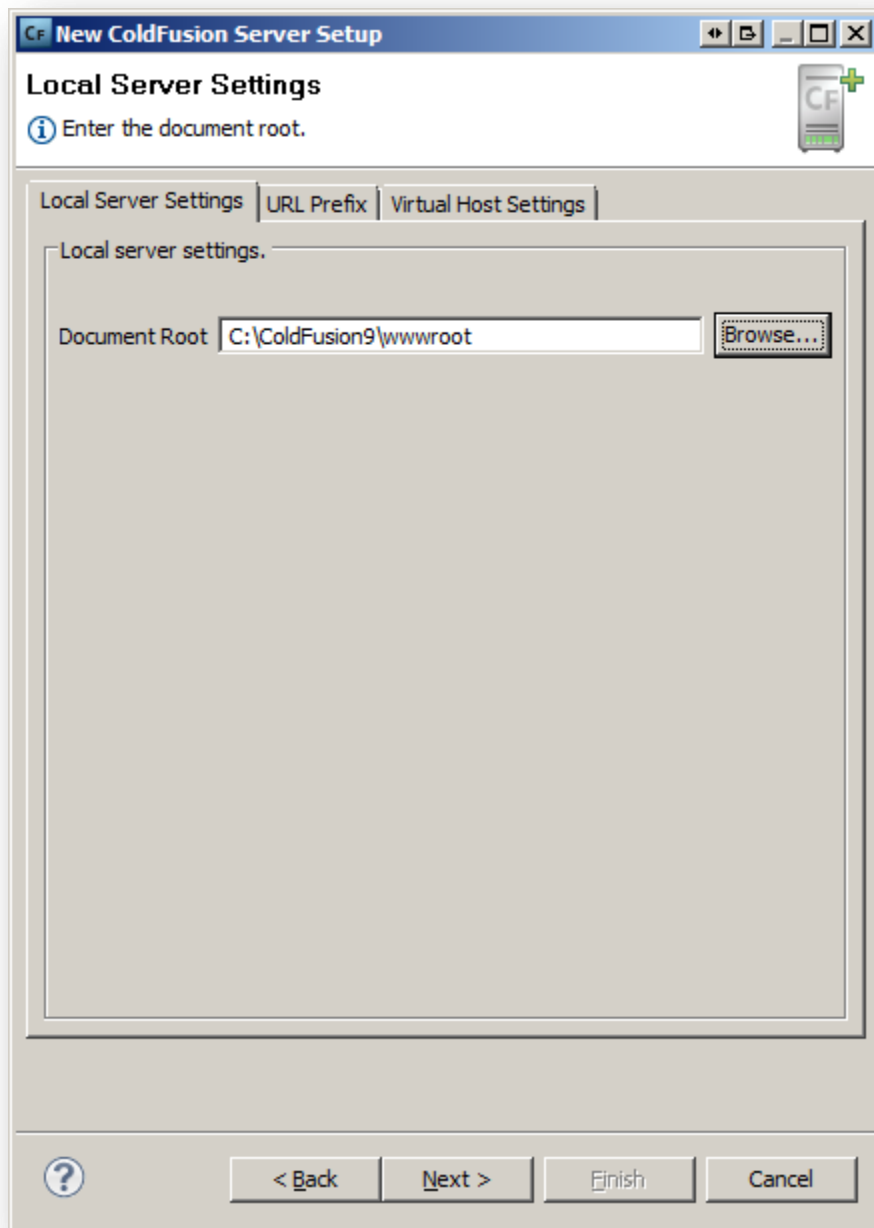
RDS User Name

RDS Password

Enable SSL ☐

☐ Auto Start ☐ Auto Stop





CF New ColdFusion Server Setup

Install Extensions


Install Settings
Installs the extensions shipped with ColdFusion Builder.

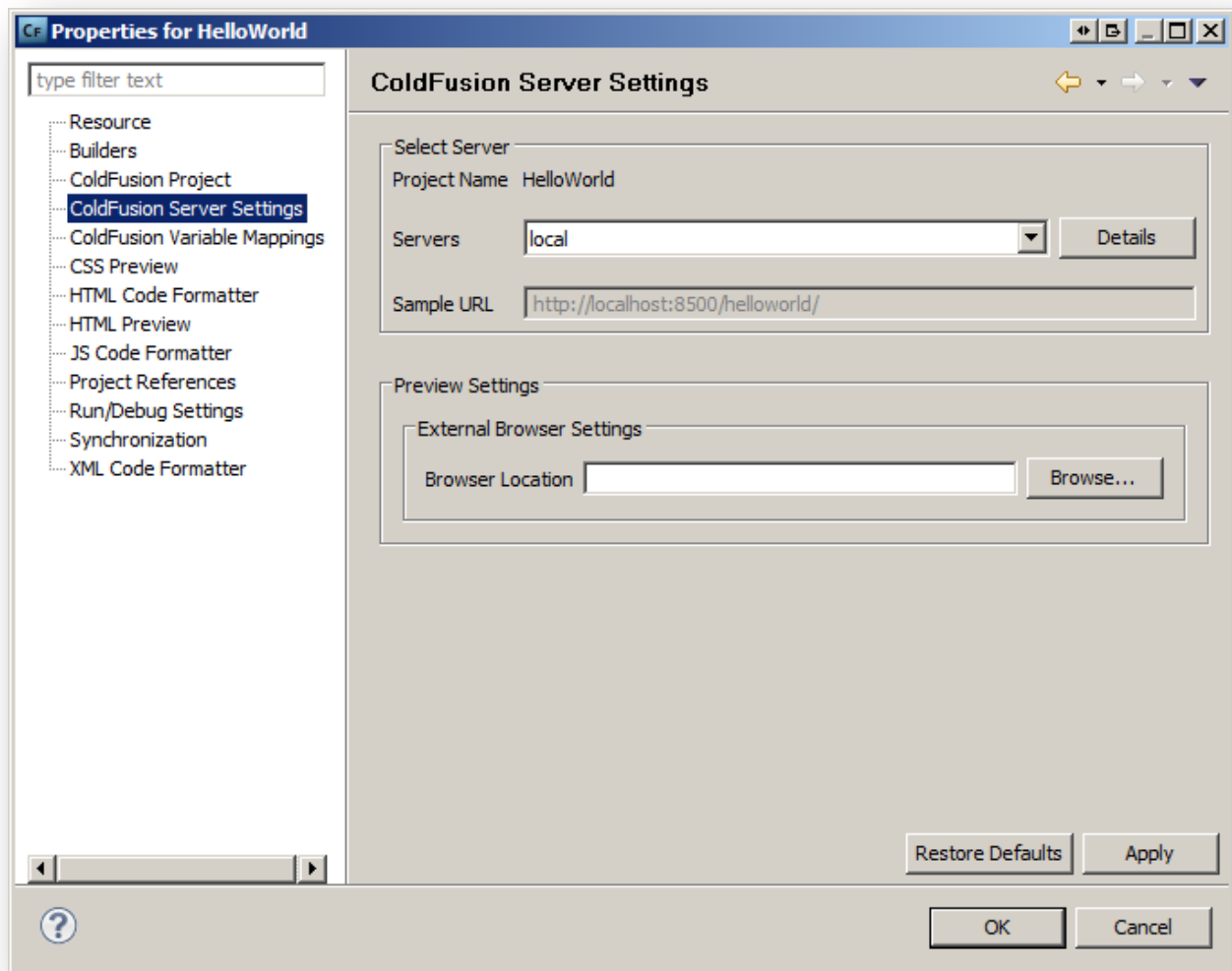
☒ Install Extensions

ColdFusion Web Root

Remote Server Web Root

Install Location





If you need to edit these settings, you can navigate to Project > Properties on right click the server name in the Servers tab of the IDE.

CF New ColdFusion Project

Add existing Sources and Extensions

Additional Source
Use Link Folder to include resources outside the project.

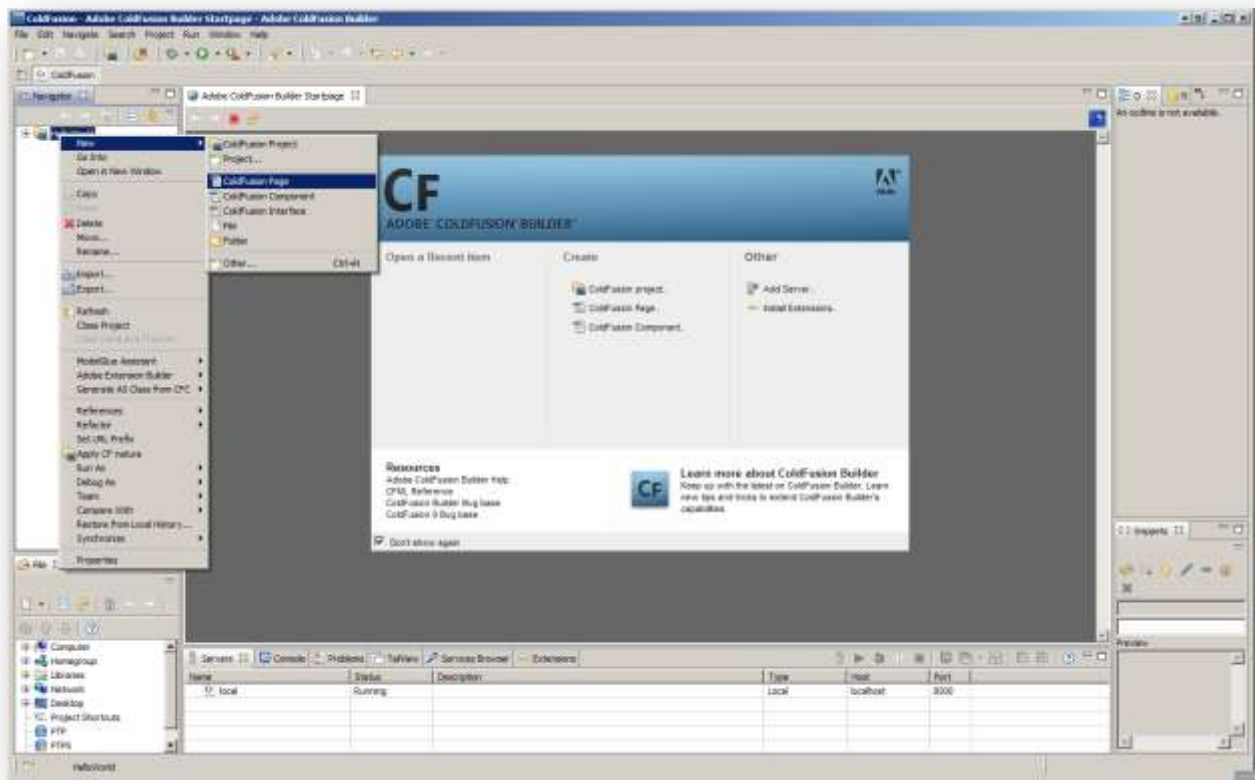
Link	Path

Add **Remove**

Select Applications

☐ ModelGlue Assistant

< Back **Next >** **Finish** **Cancel**



Add a ColdFusion page to your project.

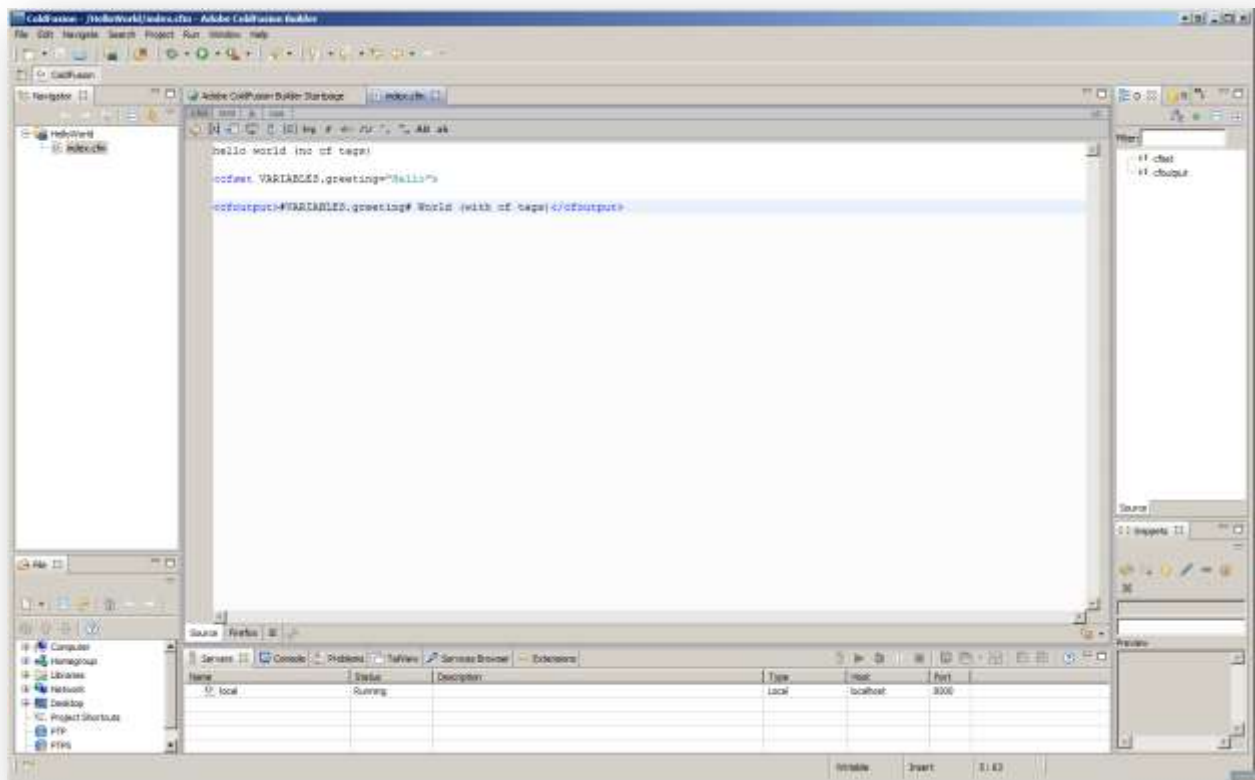
CF New ColdFusion Page

ColdFusion Page Details

Enter the CFM file name.

Location

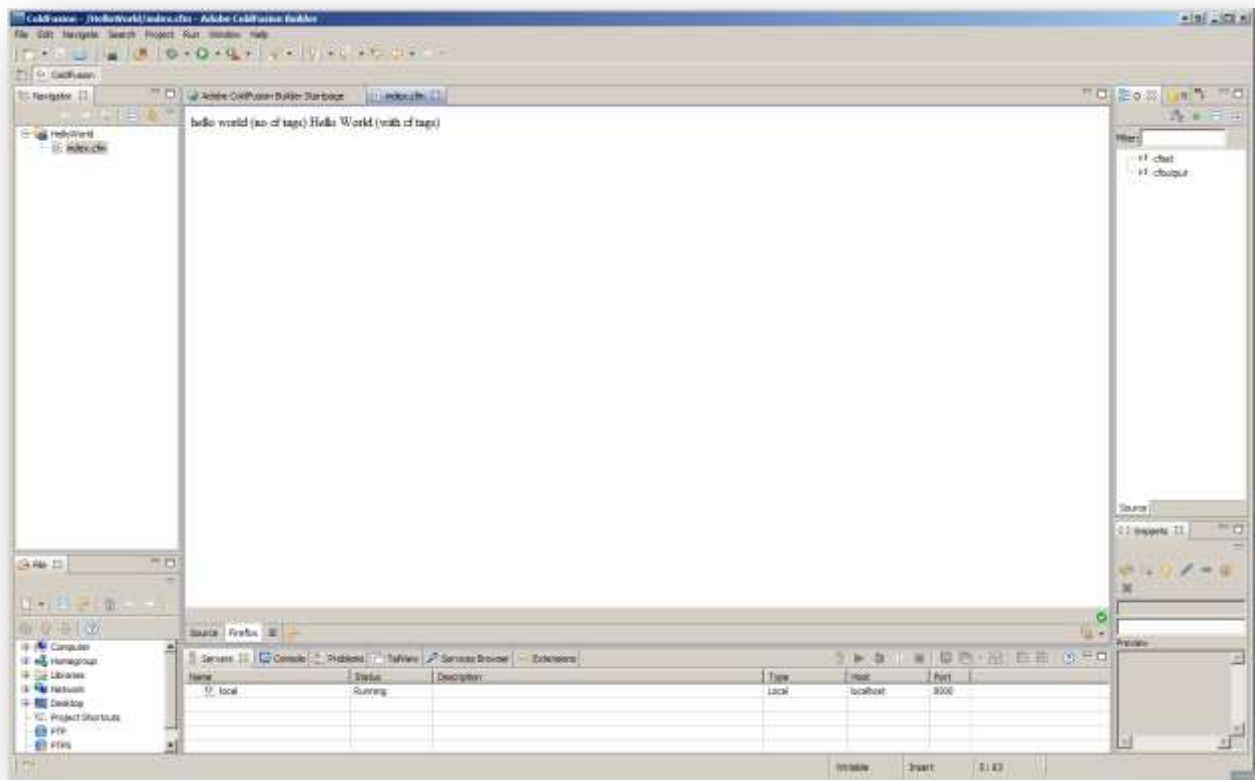
Name



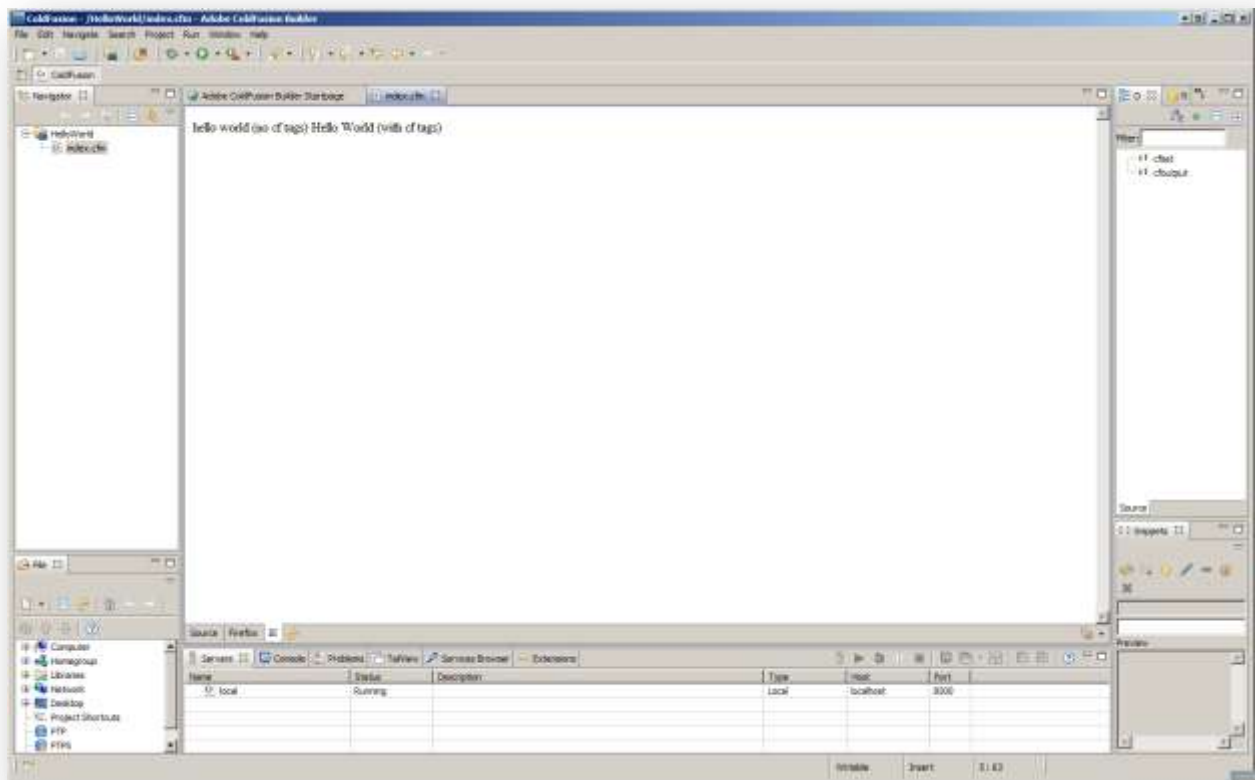
hello world (no cf tags)

```
<cfset VARIABLES.greeting="Hello">
```

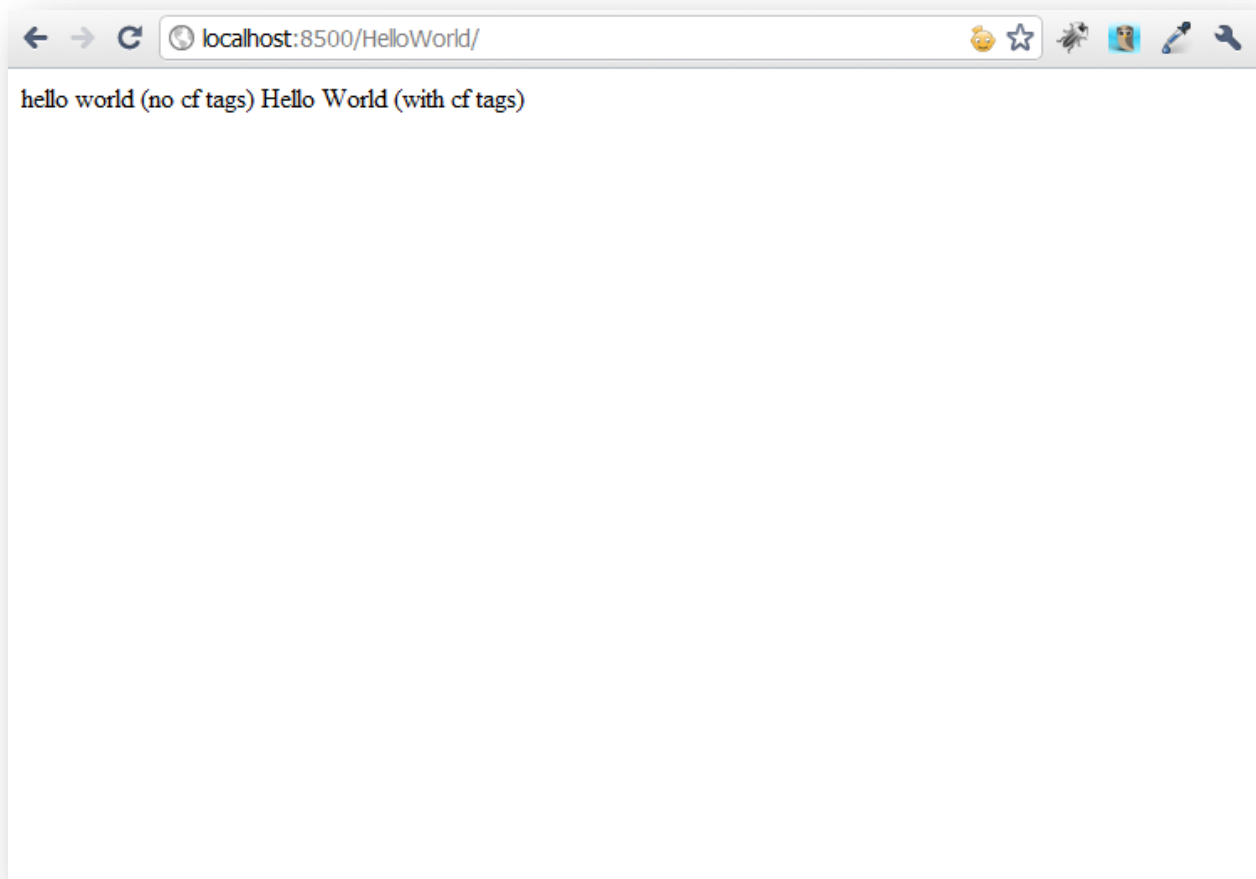
```
<cfoutput>#VARIABLES.greeting# World (with cf tags)</cfoutput>
```



Test in FireFox as well as IE right from within ColdFusion Builder.



Test in FireFox as well as IE right from within ColdFusion Builder.



Test from your local browser.